

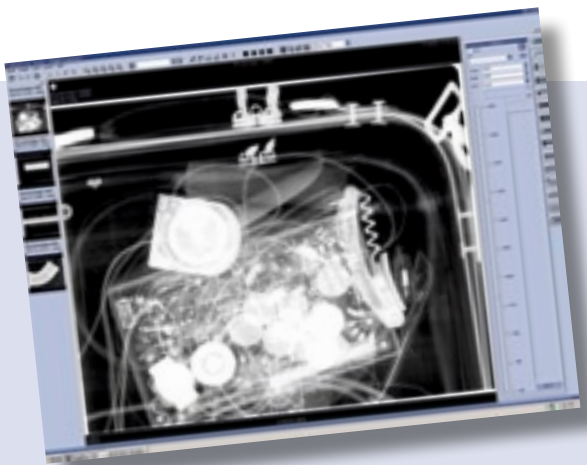
The CR Security Kit



The Portable Computed Radiography System
which Allows Immediate Response to Security Alerts



GE imagination at work



The CR Security Kit

An Integrated and Complete Solution To Portable Security Screening

The individual components of this comprehensive, on-the-spot radiography system are: a battery-powered X-ray source; a compact, computed radiography scanner, with specially developed imaging plates; a battery pack or portable DC/AC power supply for the scanner; and high specification proprietary laptop, with the latest GE digital imaging data management software. The CR Security Kit is contained within four rugged yet lightweight carrying cases.

The system is quickly unpacked on site. All that is required is for a flexible, thin imaging plate to be placed or slipped behind the object to be inspected, the plate to be exposed by the X-ray generator, the exposed plate to be processed in the scanner and the digital image to be displayed and assessed on the laptop screen, providing a sentencing decision within minutes of arrival at the incident.

The X-ray Source

The X-ray source is powered by its own battery pack and weighs just 5.4 kg (12 lb). It can penetrate up to 25.4 mm (1 inch) of steel and features lead shielding to minimize radiation leakage. A time-delay button allows the operator to move to a safe position when the unit is in position.

The Scanner

The CR Security Kit employs the CR 50XP scanner from GE, which has been specially developed for field operations where portability is required. The scanner offers an exceptional 50 μm pixel pitch, scan capability. It is used with a specially developed, phosphor imaging plate so that it provides both high throughput and high resolution. Imaging plates are provided in a standard size of 304,8 mm x 431,8 mm (12" x 17"), but other sizes can be supplied to meet particular specifications.

The Power Supply

The scanner power supply can be either a battery pack or a portable DC/AC power supply.

Image Display and Data Management

The high specification laptop computer is programmed with GE's Rhythm software, which has been specially developed for the management, analysis, sharing and storage of radiographic digital data. Images from the scanner can be displayed instantly and enhanced if necessary to highlight particular areas or detected items for more intense scrutiny. Data can also be shared by e-mail if required to obtain remote expert opinion and tagged images can be burned straight onto DVD using the laptop's internal burner.

Internationally Field Proven

The CR Security Kit has been trialled by several police forces and security organizations throughout the world and has proved to be of exceptional benefit in providing a clearer understanding of any potential threat posed by suspicious packages or objects in a wide range of situations.

Features Summary

- Provides immediate, detailed and reliable information on the contents of suspicious packages
- Uses the latest GE Computed Radiography technology and digital image processing software
- Allows data sharing for remote expert assessment
- Comprises just four easy-to-handle and robustly packaged components
- Radiography takes place without the need to move the item being investigated
- Internationally field proven
- Powered by a battery or pack or portable DC/AC power supply
- No film, no developing, no consumables

Technical Specifications

The CR Security Kit



Content	Battery Pack	Laptop with Rhythm Software	Portable X-ray Source XRS-3	CR50XP (Including Internal Eraser)	IPC2 Imaging Plates
Weight	Incl. Hardcase: 13 kg (29 lb)	Incl. Hardcase: 11 kg (25 lb)	Incl. Hardcase: 13 kg (28 lb)	Scanner Only: 14 kg (31 lb) Hardcase: 16 kg (35 lb)	
Dimensions	In Hardcase: 48x39x19 cm (19"x15"x8")	In Hardcase: 52 x43x21 cm (20"x17"x8")	In Hardcase: 52x43x21 cm (20"x17"x8")	43x43x42 cm (17"x17"x16.5")	Recommended Sizes: 10"x12" or 12"x17"
Other Specifications	Battery: 30' Operating Time Including Battery, DC-AC Convertor, Charger		Output Dose: 4.0 mR/Pulse Max, 2.6 mR/Pulse Min, Measured 12" from Source Pulse Rate: 15 Pulse per Second, Nominal Maximum Photon Energy: 270 KVP	Laser spot Size: 50 Micron Scanning Pixel Pitch (Micron, User Selectable): 50, 75, 100, 130 Bit Depth: 16 Electrical Requirements: 100 to 240 VAC ± 10%, 50/60 Hz Labeling: - CE, UL - Class 1 Laser Product (21CFR1040.10) - Class 1 Laser Product (IEC 60825-1)	



Regional Contact Information

GE Inspection Technologies

50 Industrial Park Road
Lewistown, PA 17044
USA
+1 717 242 0327

GE Inspection Technologies

Robert Bosch Strasse 3
50354 Huerth
Germany
+49 2233 6010

GE Inspection Technologies

5F, Hongcao Building
421 Hongcao Road
Shanghai 200233
China
+86 800 820 1876 (China toll free)
+86 21 3414 4620 (ext. 6029)



GE Inspection Technologies: productivity through inspection solutions

GE Inspection Technologies provides technology-driven inspection solutions that deliver productivity, quality and safety. We design, manufacture and service ultrasonic, remote visual, radiographic and eddy current equipment and systems. We offer specialized solutions that will help you improve productivity in your applications in the aerospace, power generation, oil & gas, automotive or metals industries.

www.ge.com/inspectiontechnologies