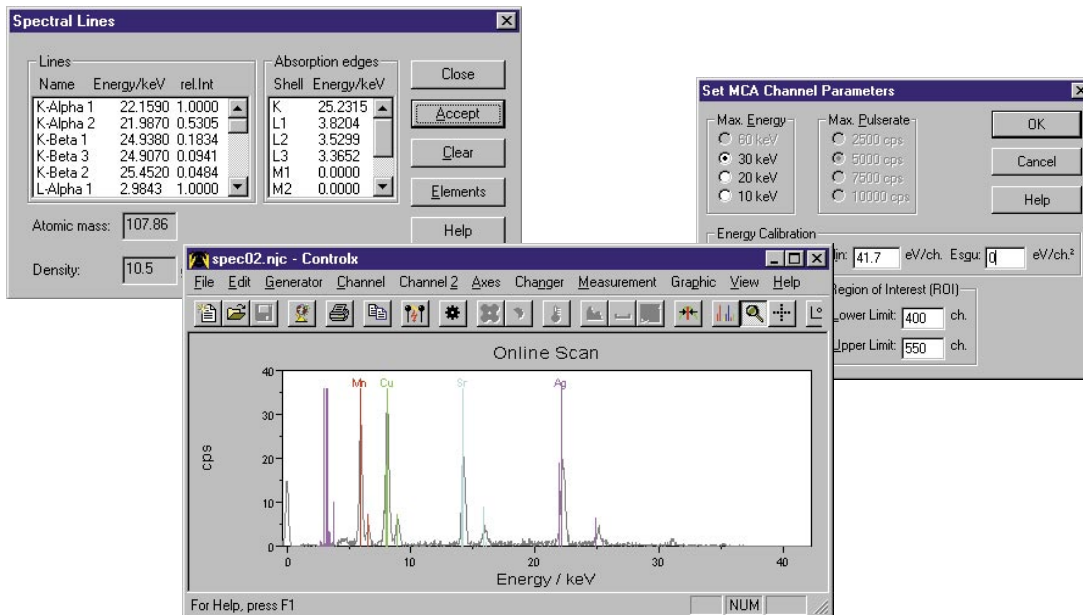


# SEIFERT RAYFLEX Measure

Option: SSD / LUX



## Features

- Data accumulation in single or multi channel mode
- Energy dispersive measurements in multi channel mode
- Suppression of Kb radiation in single channel (analyzer) mode without any monochromator
- Energy calibration against known standard
- Overlay of element information for energy dispersive measurements possible
- Storage of complete energy spectrum for each scan position
- Two detector setup in combination with scintillation counter

GE imagination at work

