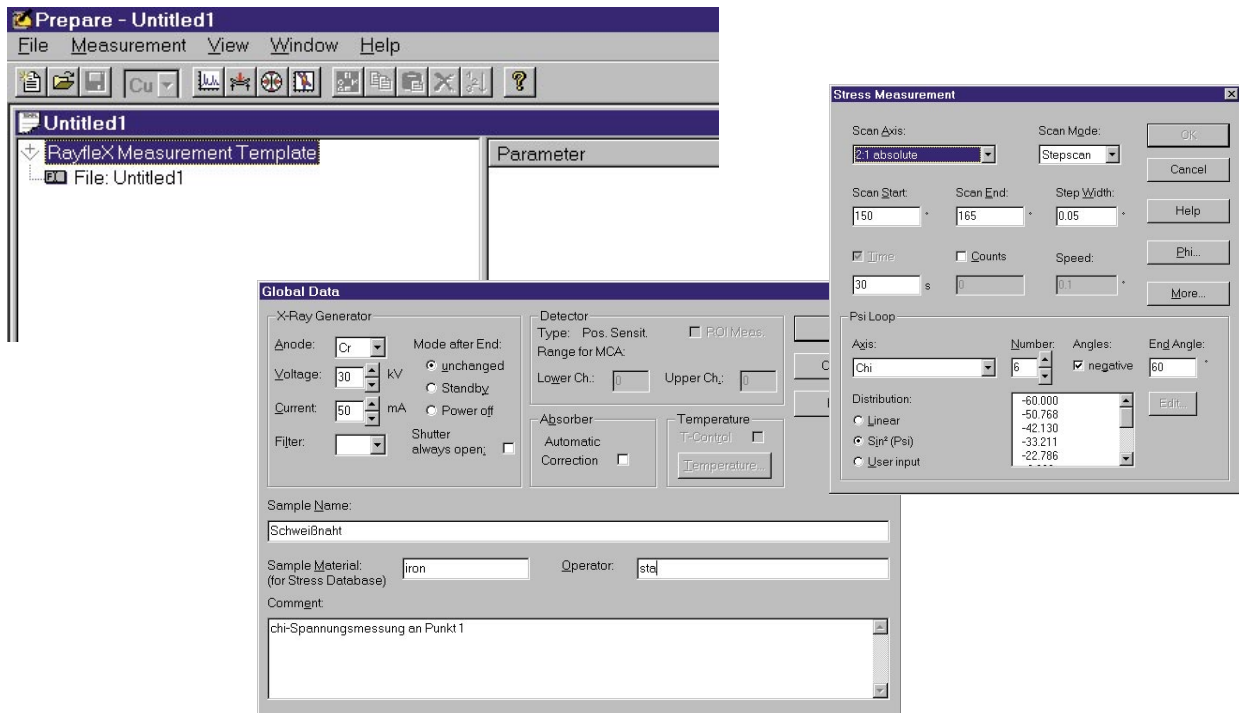


SEIFERT RAYFLEX Measure

Option: STRESS



Features

- Preparation of stress templates and measurement of stress jobs with time and/or counts preselection
- Measurement in $\psi = \chi$ and $\psi = \varpi$ possible
- ψ distribution as linear ψ , $\sin^2 \psi$ or user defined ψ
- Number of inclinations determined by user, positive and/or negative ψ angles
- Sample rotation and/or oscillation during measurement possible
- Measurement at different φ positions for stress tensor determination
- Different measurements in one job or as job list
- Online graphics during measurement
- Detailed online help

GE imagination at work

